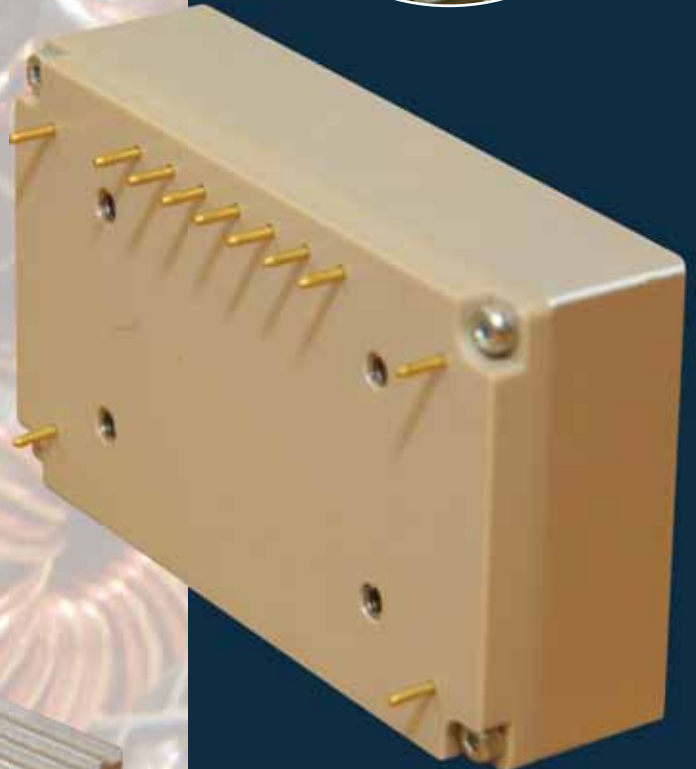


Cheetah Power Modules

- **Quarter size footprint 100W Output Power**
- **Complete Power System NOT JUST CONVERTER STAGE**
- **Transient Ride-through and input current limit active circuit**
- **Common mode and differential mode magnetic filters with associate X and Y filter capacitors**
- **Lightening Suppressors**
- **Multi Alarm Bite Monitors:**
 - Power Good on Input
 - Power Good on Output
 - Over Voltage Protection
 - Re-entrant Over-temperature protection at 115°C
- **Automatic Power sharing with defined voltage output characteristic without Single point of Failure system share line:**
 - Integrated Primary and Secondary Current Limit
 - All above Removes Dormancy Problems
- **Robust Mechanical Integrity for Power and Bite Pins**
- **Superior Shock Sustaining and Lowest Weight Category using State of the Art Integrated Planar Magnetics**

Pulse[™]
ELECTRONICS

An Ipeco Company



Pulse Electronics

Brigade House Alington Road Little Barford
St. Neots Cambridgeshire PE19 6WG England
Tel: +44 (0)1480 216516
Fax: +44 (0)1480 472428
Website: www.ipeco.co.uk
email : sales@pulse-electronics.co.uk

Pulse Electronics is a division of Ipeco Holdings Ltd.

Cheetah Series



BS EN ISO 9001:2000

Specifications

Input Characteristics

Module Input Options	28VDC (16V to 42V)
Input Transient	MIL-STD-704E*

Notes: *Except Fig. 11 for undervoltage

Output Characteristics – Up to Three O/P's

@ Peak Power 100W

CHI00W-DC028S-48/2
CHI00W-DC028S-24/3A5
CHI00W-DC028S-15/6
CHI00W-DC028S-15/2A5-15N/2A5-5/4
CHI00W-DC028S-1V2/4-3V3/4
CHI00W-DC028S-15/3-15N/3-3V3/8
CHI00W-DC028S-12/3-12N/3-5/10

Load Regulation	< 1% typical
Line Regulation	< 0.3% typical
Ripple and Noise (20MHz BW)	< 1% typical

General

Efficiency	90%
Isolation	Input to Case 500V
	Input to Output 500V
	Output to Case 500V
Form Factor	See Dwg

Protection Characteristics

Output Over-voltage	115% of nominal
Output Over-current	115~140% of maximum
Over-temperature	115°C baseplate (retries at 110°C)
Reverse Input	Yes
Zero Load Operation	Yes
Short Circuit	Latch or retry option
Input Over-current	150% of maximum

Alarms

Output Voltage Good, Input Voltage Good and Over-temperature

Environmental Characteristics

Temperature	-40°C to +70°C*
Notes:	*Dependent on cooling method.
Shock	MIL-STD-810E
Vibration	MIL-STD-810E
Acceleration	MIL-STD-810E
Mass	< 100g

EMC Characteristics

28VDC	MIL-STD-461E (Aircraft use) CE102
-------	--------------------------------------

Note: Achievable with minimum external components. Protected pins provisioned to facilitate external connection for hold-up and transient protection. Please ask factory for details.

Reliability

MTBF	20,000hrs @ AUF 50°C as per MIL-HDBK-217[2]
------	--

Optional

Intelligent power control digital interface available. Please ask factory for details.



Dimensions

Width: 40mm Height: 20mm Depth: 70mm