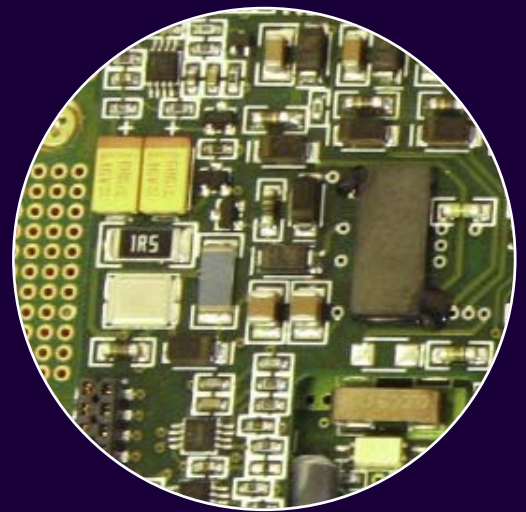
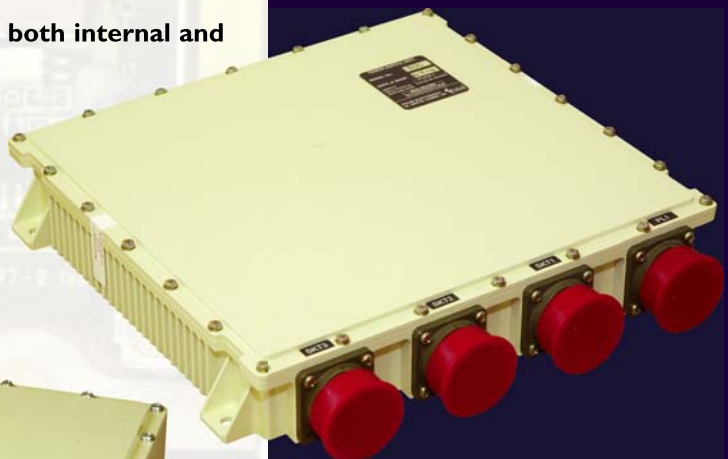


# Tiger Power System

- **Complete Power System up to 2kW Output Power**
- **Up to Six Power Converter Channels each with system characteristics to Resolve Dormancy issues:**
  - Active Transient Ride-through
  - Input current limit
  - Automatic Power sharing with defined voltage output characteristics without Internal Single point of Failure system share line
- **ULTIMATE EMC PERFORMANCE MEETING DEF-STAN 59-41 LAND CLASS A**
- **TRUE N +1 System Redundancy and Protection on Both Input and Output Terminals suitable for Battery Charging for Land vehicles**
- **Multi Channel Alarm Bite Monitors:**
  - Power Good on Output
  - Over Voltage Protection
  - Re-entrant Multi Alarm Thermal spreading Over Temperature protection at 105°C and restarts at 95°C - i.e System reduces power when one channel stops but recommences power provision as soon as it cools down
- **Ultimate Mechanical Integrity associated with both internal and external connections**
- **Superior Shock Sustaining and Lowest weight Category with State of the Art Integrated Planar Magnetics**



## Pulse Electronics

Brigade House Alington Road Little Barford  
St. Neots Cambridgeshire PE19 6WG England  
Tel: +44 (0)1480 216516  
Fax: +44 (0)1480 472428  
Website: [www.ipeco.co.uk](http://www.ipeco.co.uk)  
email : [sales@pulse-electronics.co.uk](mailto:sales@pulse-electronics.co.uk)

Pulse Electronics is a division of Ipeco Holdings Ltd.

# Tiger Series

## Specifications



BS EN ISO 9001:2000

### Input Characteristics

Module Input Options	115VAC 400Hz PFC* 270VDC* 28VDC (16V to 42V) *Dual I/P or 3PH I/P
Input Transient (270VDC)	MIL-STD-704E
(115VAC 400Hz)	MIL-STD-704E
(28VDC)	DEF-STAN 61-5 Pt. 6, MIL-STD-704E

Notes: \*In order to meet the undervoltage requirements, external holdup capacitance will be required  
Integrated holdup depends on output configuration, please see output characteristics

### Output Characteristics – N+1 Redundant

Configurable Nominal Outputs	48V @ 20.8A
@ Maximum Current for either 28V @ 35.7A 270VDC or 115VAC 400Hz	24V @ 41.7A
Inputs	15V @ 66.6A 12V @ 75.0A

Notes: Additional dual redundant Auxiliary outputs 40V @ 0.5A or 15V @ 1.0A  
Dual O/P versions are available including up to 90V O/P

Configurable Nominal Outputs @ Maximum Current	28V @ 65.0A*
For 28VDC Input	24V @ 60.0A* (30A+) 15V @ 100A* (50A+)

Notes: \*Output power is dependent upon battery input - 24V-32V  
\*When integrated with 12ms internal holdup  
Dual O/P versions are available including up to 90V O/P

Other Available (Multiple)	5V @ 30.0A* (60A**)
Variable Output Configurations @	3V3 @ 20.0A* (40A**) ±12V @ 2.5A* (5A**)
Maximum Current (Single)	5V @ 125A* or 3V3 @ 125A*

for 28VDC Input

Notes: \*Dual redundant  
\*\*Non-redundant  
\*When integrated with 12ms internal holdup

Load Regulation	< 1% typical
Line Regulation	< 0.3% typical
Ripple and Noise (20MHz BW)	< 1% typical

### General Input Options 28VDC 270VDC/ 115VAC

Efficiency	85%	90% max
Isolation Input to Case	500V	1.4kV
Input to Output	500V	1.4kV
Output to Case	500V	500V

### Protection Characteristics - Multi Channel

Output Over-voltage	115% of nominal
Output Over-current	115~140% of maximum
Over-temperature	105°C baseplate (retries at 95°C)
Reverse Input	28VDC Input Only
Zero Load Operation	Yes
Short Circuit	Latch or retry option
Input Over-current	150% of maximum

### Alarms

Output Voltage Good, Input Voltage Good and Over-temperature

### Environmental Characteristics

Temperature	-32°C to +70°C*
-------------	-----------------

Notes: \*Dependent on cooling method

Shock	DEF-STAN-0035 Pt. 3 Chp. 2-03 M3
Vibration	DEF-STAN-0035 Pt. 3 Chp. 2-01 M1
Acceleration	BS 3G100 Pt. 2 Sec. 3 CI 1A & CI12
Drop	DEF-STAN-0035 Pt. 3 Chp. 2-04 M4
Ingress	IP67
Mass	< 4kg (series 1), <7kg (series 2)

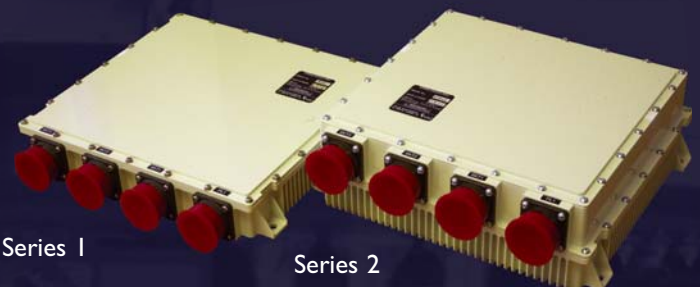
### EMC Characteristics

270VDC & 115VAC 400Hz Input	MIL-STD-461E (Aircraft use) CE101, CE102, CS101, CS114, CS116
28VDC Input	*DEF-STAN 59-41 (Options available for minimum tested compliance to Land Class A DCE01, DCS01, DRE01)

Note: \*Form Factor applies to series 2

### Optional

Intelligent power control digital interface available. Please ask factory for details.



### Dimensions

Series 1:	Width: 255mm	Height: 46mm	Depth: 240mm
Series 2:	Width: 255mm	Height: 86mm	Depth: 240mm